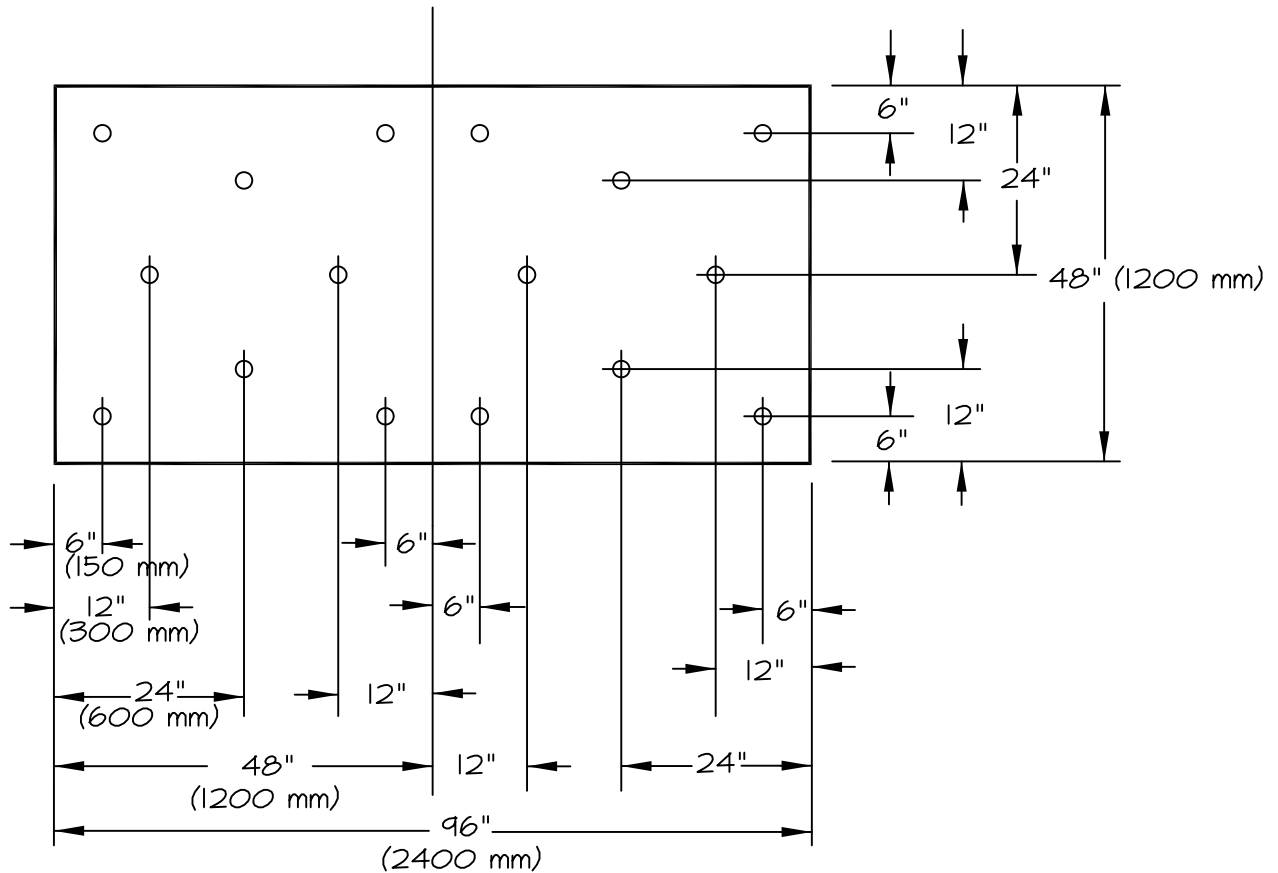


VersiWeld® ADHERED ROOFING SYSTEM



4' x 8' (1200 x 2400 mm) INSULATION BOARDS

NOTES:

1. VERSICO FASTENERS AND 3" (75 mm) DIAMETER PLATES MUST BE USED FOR INSULATION ATTACHMENT.
2. A REDUCED FASTENING PATTERN MAY BE USED WITH MIN. 2" (50 mm) THICK (TOP LAYER) VERSICO POLYISOCYANURATE INSULATION. REFER TO DETAIL VWA-27.2 FOR FASTENING REQUIREMENTS.

VWA-27.1

VERSICO INSULATION ATTACHMENT

VERSICO
INCORPORATED



A subsidiary of Carlisle SynTec Incorporated
© 2006 VERSICO INCORPORATED