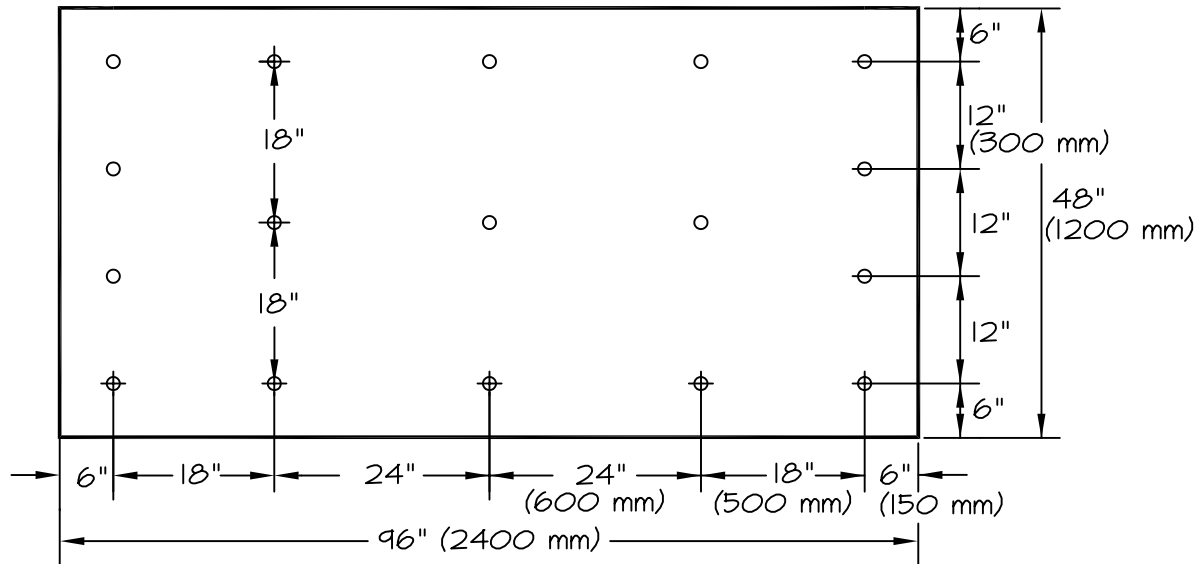


## VersiWeld® ADHERED ROOFING SYSTEM



4' x 8' (1200 x 2400 mm) ORIENTED STRAND BOARD (OSB)

### NOTES:

1. VERSICO FASTENERS AND 3" (75 mm) DIAMETER PLATES MUST BE USED FOR OSB ATTACHMENT.
2. JOINTS IN OSB MUST BE STAGGERED WITH JOINTS IN INSULATION BELOW.
3. OSB MUST BE POSITIONED WITH A 1/8" (3 mm) GAP BETWEEN BOARDS.

VWA-27..3

OSB ATTACHMENT

VERSICO  
INCORPORATED



A subsidiary of Carlisle SynTec Incorporated  
© 2006 VERSICO INCORPORATED