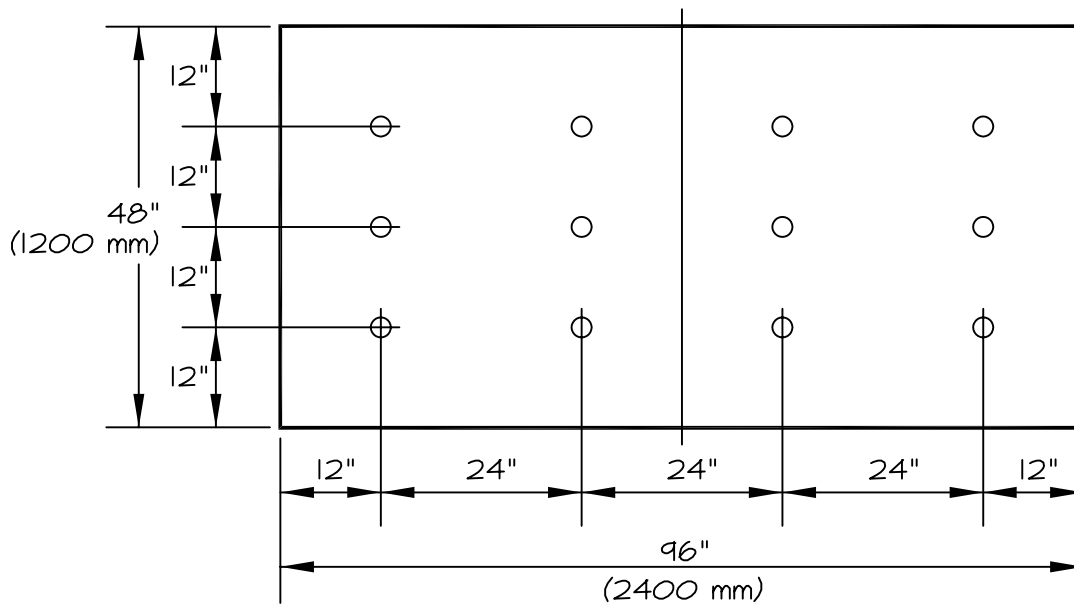


VersiWeld® ADHERED ROOFING SYSTEM



4' (1200 mm) x 8' (2400 mm) BOARDS

NOTE:

IF 5/8" (16 mm) THICK DENS-DECK PRIME IS USED, A REDUCED INSULATION FASTENING DENSITY MAY BE USED. CONTACT VERSICO FOR REQUIREMENTS.

VWA-27.6

1/4" OR 1/2" THICK DENS-DECK PRIME

VERSICO
INCORPORATED



A subsidiary of Carlisle SynTec Incorporated
© 2006 VERSICO INCORPORATED