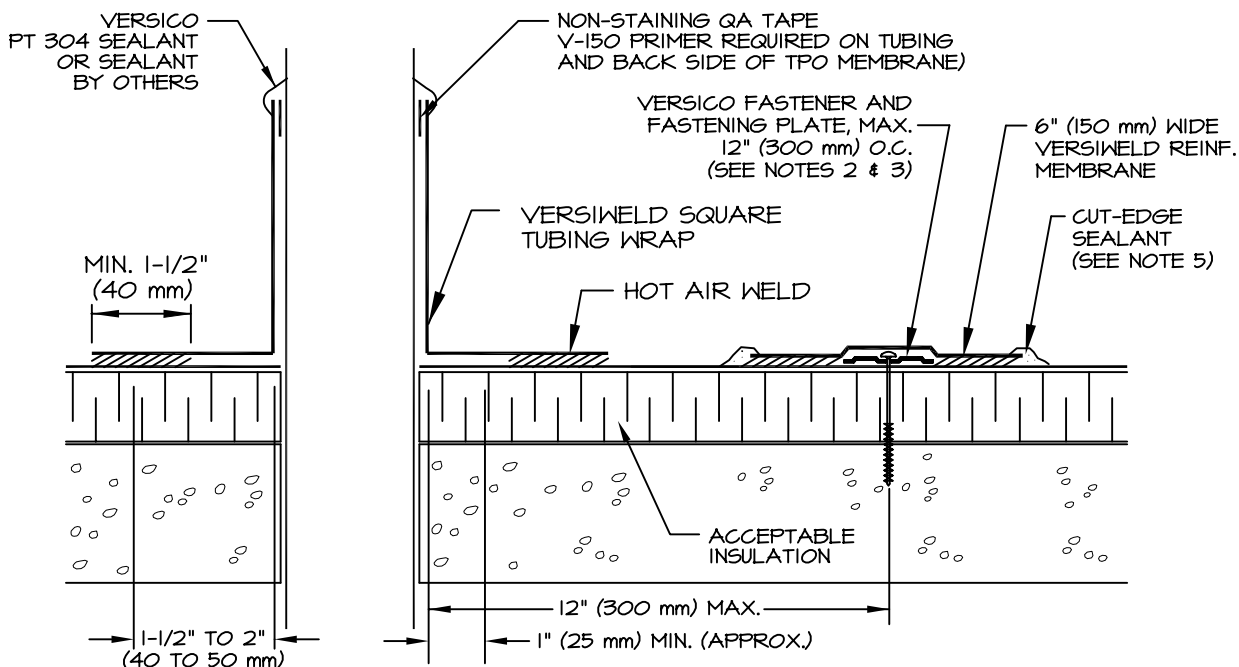


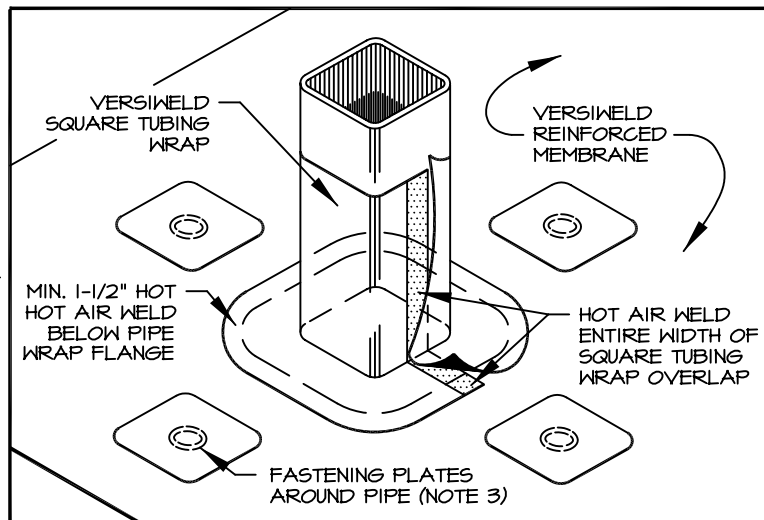
# VersiWeld® ROOFING SYSTEM



**NOTES:**

1. REMOVE ALL LEAD AND OTHER FLASHING BEFORE INSTALLING FIELD FABRICATED PIPE SEAL.
2. INSTALL A MINIMUM OF 4 FASTENING PLATES AROUND TUBES WITH A DIMENSION UP TO 6" (150 mm). ADDITIONAL FASTENING PLATES WILL BE REQUIRED FOR TUBES WITH SIDE DIMENSIONS GREATER THAN 6" AND SHALL BE SPACED 12" (300 mm) ON CENTER MAXIMUM.

FASTENERS/PLATES ARE NOT REQUIRED ON ADHERED SYSTEMS UNLESS TUBE SIDE DIMENSIONS EXCEED 18" (500 m).



3. PLATES MAY BE POSITIONED INSIDE (OR BELOW) THE PIPE FLASHING FLANGE AS SHOWN ON DETAIL VWC-8.4.
4. REFER TO "ATTACHMENT I, MEMBRANE FASTENING CRITERIA" FOR PROPER FASTENERS AND PLATES.
5. APPROXIMATELY 1/8" (3 mm) DIAMETER BEAD OF CUT-EDGE SEALANT IS REQUIRED ON CUT EDGES OF VERSIWELD REINFORCED MEMBRANE.

VWC-8.6

SQUARE TUBING WRAP

**VERSICO**  
INCORPORATED



A subsidiary of Carlisle SynTec Incorporated  
© 2006 VERSICO INCORPORATED