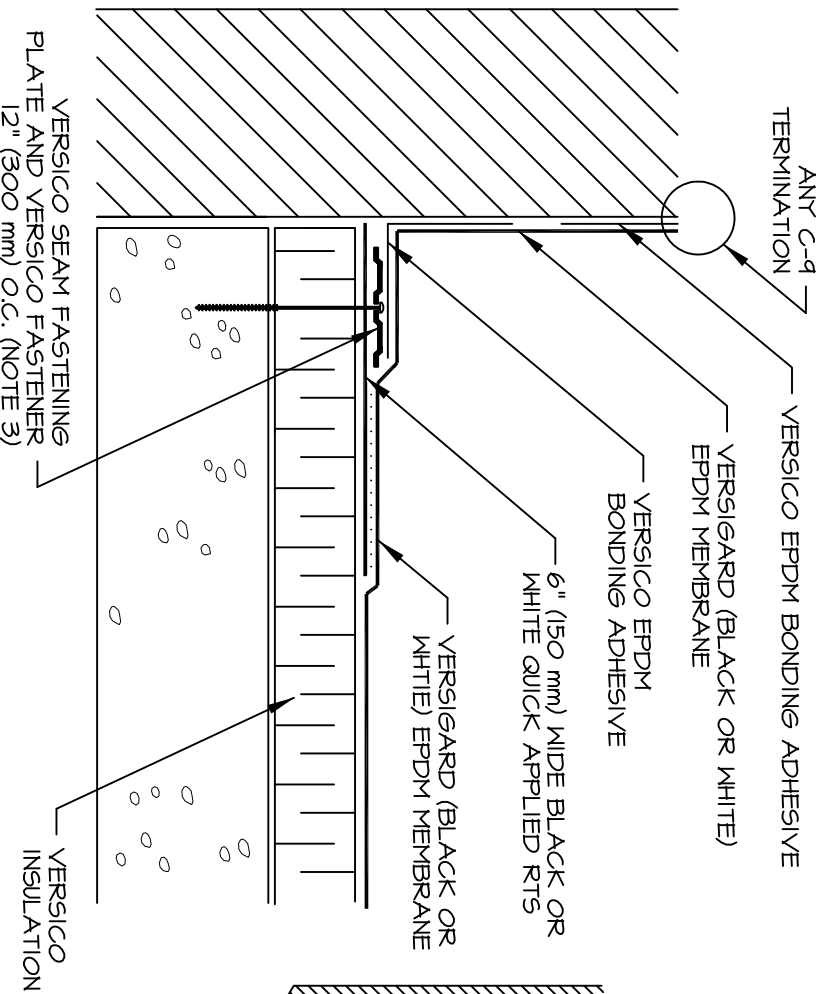
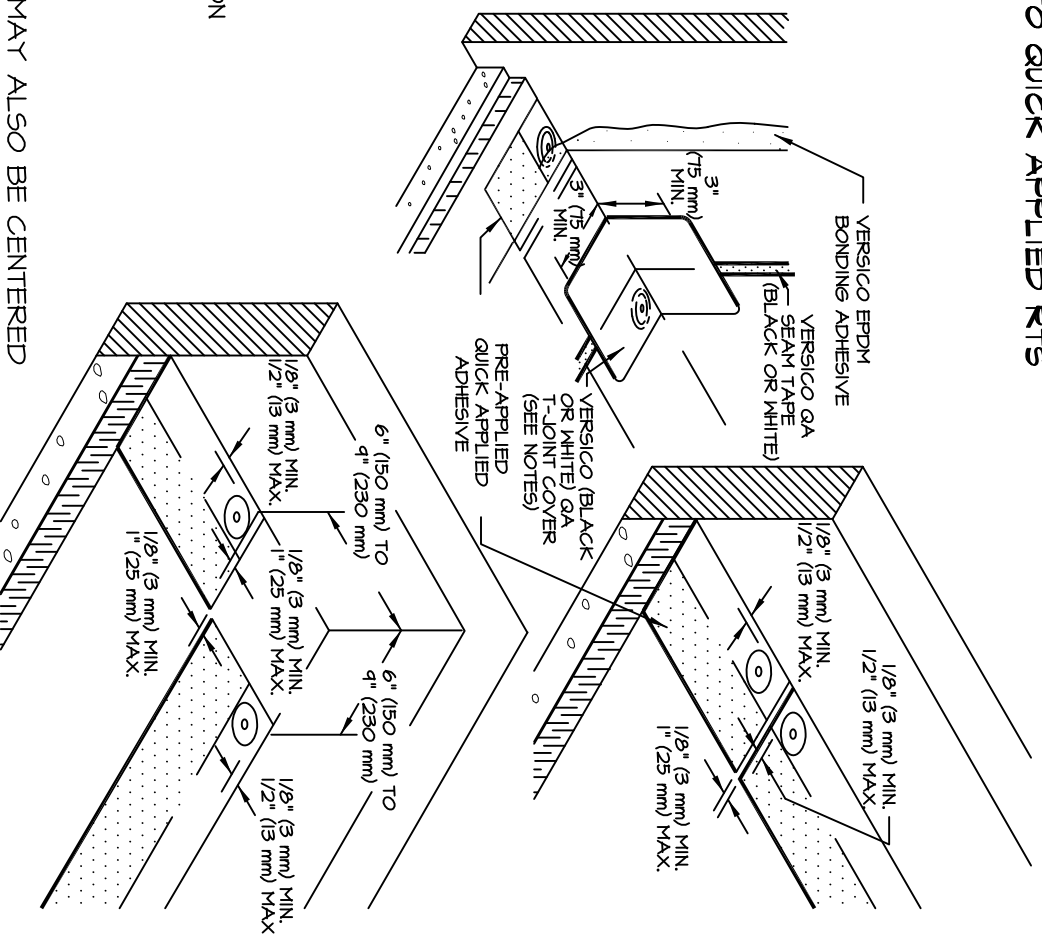


**V-150 PRIMER MUST BE APPLIED TO BACK SIDE OF EPDM PRIOR TO ADHERING MEMBRANE TO QUICK APPLIED RTS**



**NOTES:**

1. FOR CORNER APPLICATION, SEE DETAIL C-15.4.
2. 6" (150 mm) WIDE QUICK APPLIED EPDM FLASHING MAY ALSO BE CENTERED OVER FIELD SPLICE AT ANGLE CHANGE.
3. POLYMER SEAM PLATES ARE REQUIRED IN LIEU OF SEAM FASTENING PLATES FOR MECHANICALLY ATTACHED ROOFING SYSTEMS OVER STEEL DECKS.



**C-12.3 (OPTION #2)**

**WALL FLASHING WITH QUICK APPLIED RTS STRIP**