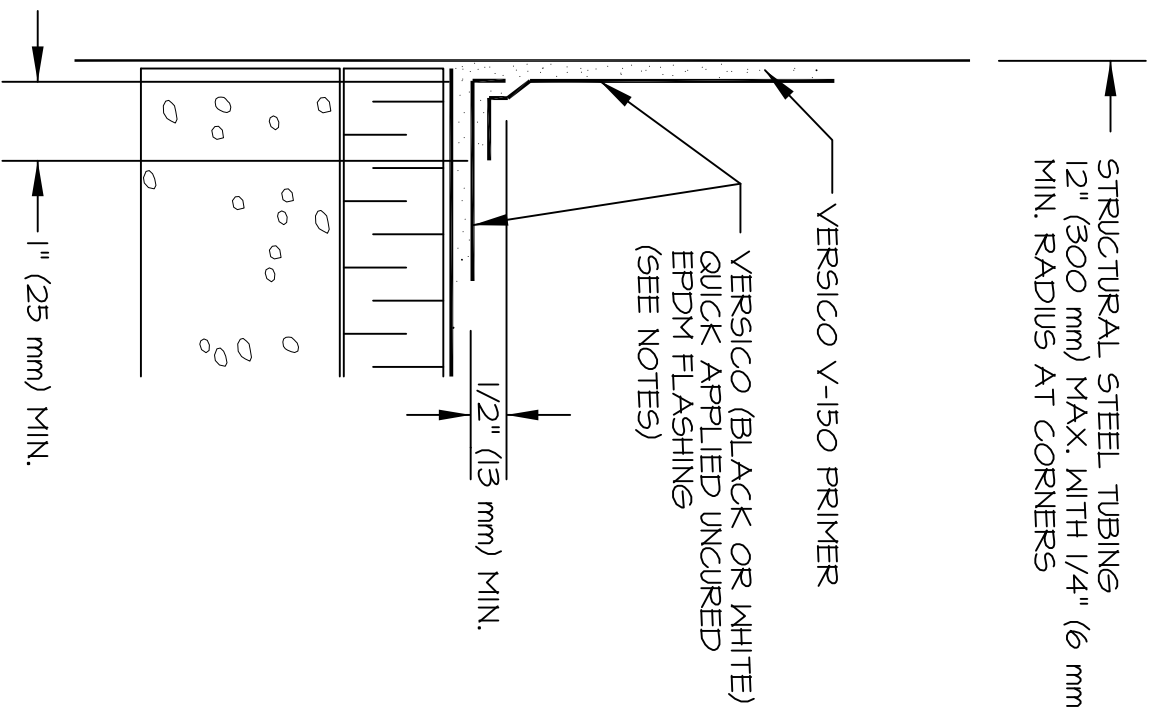
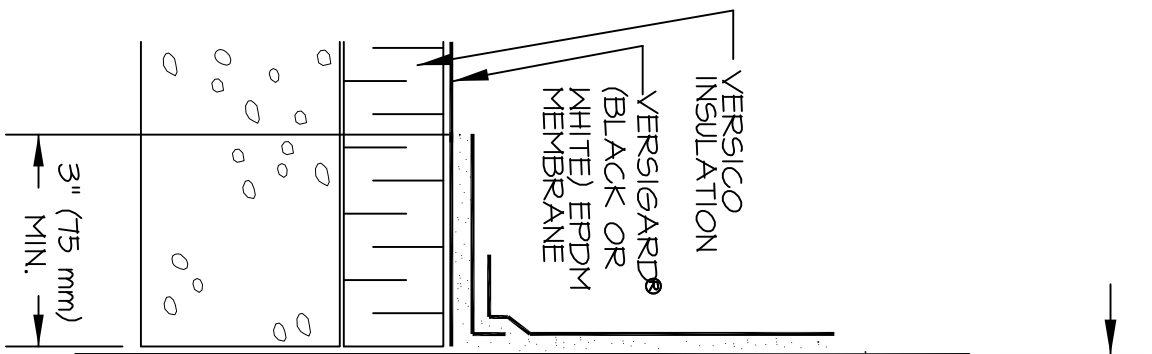


STRUCTURAL STEEL TUBING
12" (300 mm) MAX. WITH 1/4" (6 mm)
MIN. RADIUS AT CORNERS



NOTES:

1. FOR USE WITH SQUARE OR RECTANGULAR STRUCTURAL STEEL TUBING WITH ROUNDED CORNERS.
2. REMOVE ALL LEAD AND OTHER FLASHING BEFORE INSTALLING FIELD-FABRICATED PIPE SEAL.
3. FOR TUBING MORE THAN 12" (300 mm) ACROSS, SEE DETAIL C-5 OR C-16.
4. QUICK APPLIED UNCURED EPDM FLASHING WRAPPED AROUND STEEL TUBING SHALL HAVE A 3" (75 mm) MINIMUM MEMBRANE SPLICE.
5. A DOUBLE WRAPPING OF UNCURED EPDM FLASHING IS REQUIRED ON STRUCTURAL STEEL TUBING WITH A CORNER RADIUS LESS THAN 1/4" (6 mm).
6. IN COLDER TEMPERATURES, A HEAT GUN MUST BE USED WHEN FORMING QUICK APPLIED UNCURED EPDM FLASHING.
7. ON MECHANICALLY ATTACHED ROOFING SYSTEMS, ADDITIONAL MEMBRANE SECUREMENT IS REQUIRED. REFER TO DETAIL MA-14.

C-14.4

STRUCTURAL STEEL TUBING