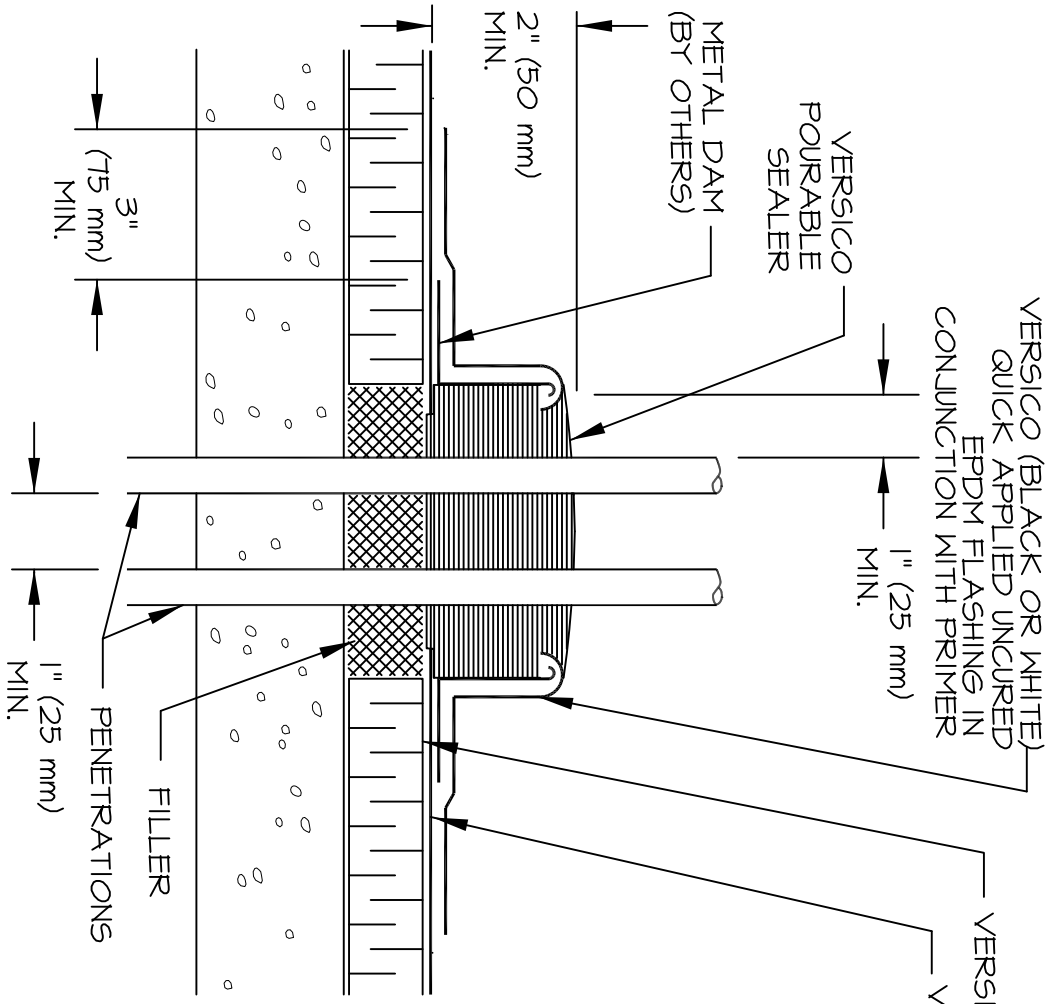


SIDES CANNOT EXCEED 12" (300 mm)



PENETRATIONS, MEMBRANE FLASHING AND METAL DAM (INSIDE POCKET) MUST BE PRIMED PRIOR TO APPLYING POURABLE SEALER

VERSICO (BLACK OR WHITE) QUICK APPLIED UNCURED EPDM FLASHING IN CONJUNCTION WITH PRIMER

VERSICO POURABLE SEALER

METAL DAM (BY OTHERS)

VERSIGARD (BLACK OR WHITE) EPDM MEMBRANE

VERSICO INSULATION

FILLER

PENETRATIONS

- NOTES:
1. 180° F (82° C) MAXIMUM TEMPERATURE.
 2. POURABLE SEALER MUST CONTACT PRIMED QUICK APPLIED UNCURED EPDM FLASHING AND DECK MEMBRANE.
 3. DECK FLANGE MUST BE CONTINUOUS WITH ROUNDED CORNERS.
 4. POURABLE SEALER POCKET MAY BE ROUND.
 5. POURABLE SEALER POCKET TO BE 1" (25 mm) MINIMUM FROM PENETRATION ON ANY SIDE.
 6. POURABLE SEALER MUST COMPLETELY FILL POURABLE SEALER POCKET TO PREVENT PONDING OF WATER.
 7. POURABLE SEALER TO BE MINIMUM 2" (50 mm) DEEP.
 8. IF ANY SIDE EXCEEDS 12" (300 mm), USE WOOD NAILERS; SEE C-16.2.
 9. ALL DEBRIS (PAINT, RUST, LEAD, OTHER FLASHINGS, ETC.) MUST BE REMOVED FROM THE PENETRATIONS.
 10. ON MECHANICALLY ATTACHED ROOFING SYSTEMS, ADDITIONAL MEMBRANE SECUREMENT IS REQUIRED. REFER TO SPECIFICATIONS.

C-16.1

FIELD FABRICATED POURABLE SEALER POCKET

