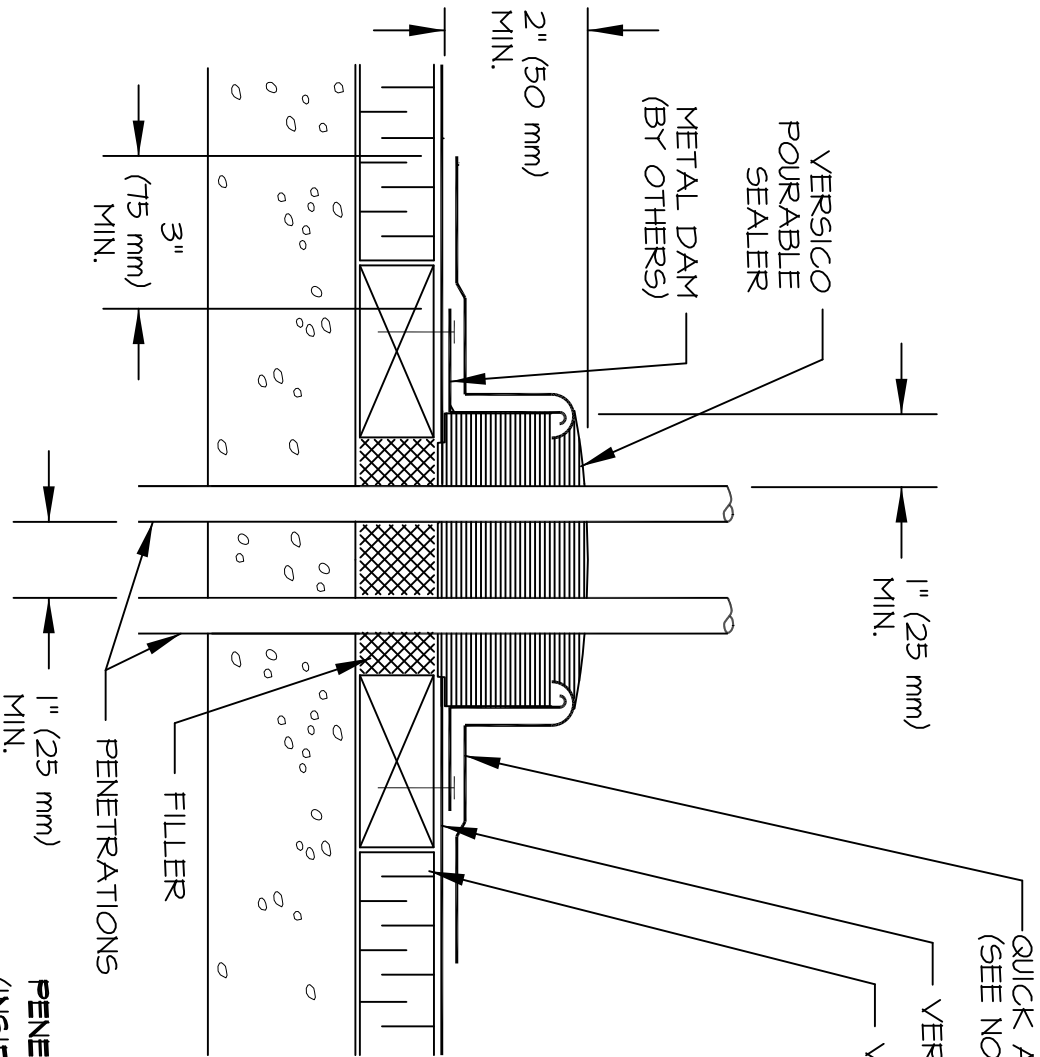


SIDES GREATER THAN 12" (300 mm)



QUICK APPLIED UNCURED EPDM FLASHING (BLACK OR WHITE)
(SEE NOTES)

VERSIGARD® (BLACK OR WHITE) EPDM MEMBRANE

VERSICO INSULATION

VERSICO
POURABLE
SEALER

METAL DAM
(BY OTHERS)

2" (50 mm)
MIN.

1" (25 mm)
MIN.

3"
(75 mm)
MIN.

1" (25 mm)
MIN.

FILLER
PENETRATIONS

NOTES:

1. 180° F (82° C) MAXIMUM TEMPERATURE.
 2. POURABLE SEALER MUST CONTACT PRIMED QUICK APPLIED UNCURED EPDM FLASHING AND DECK MEMBRANE.
 3. DECK FLANGE MUST BE CONTINUOUS WITH ROUNDED CORNERS.
 4. POURABLE SEALER POCKET MAY BE ROUND.
 5. POURABLE SEALER POCKET TO BE 1" (25 mm) MINIMUM FROM PENETRATION ON ANY SIDE.
 6. POURABLE SEALER MUST COMPLETELY FILL POURABLE SEALER POCKET TO PREVENT PONDING OF WATER.
 7. POURABLE SEALER TO BE MINIMUM 2" (50 mm) DEEP.
 8. ALL DEBRIS, (PAINT, RUST, LEAD, OTHER FLASHINGS, ETC.) MUST BE REMOVED FROM THE PENETRATION.
 9. ON MECHANICALLY ATTACHED ROOFING SYSTEMS, ADDITIONAL MEMBRANE SECUREMENT IS REQUIRED. REFER TO SPECIFICATION.
- PENETRATIONS, MEMBRANE FLASHING AND METAL DAM (INSIDE POCKET) MUST BE PRIMED PRIOR TO APPLYING POURABLE SEALER.**

**C-16.2
FIELD FABRICATED POURABLE SEALER POCKET
GREATER THAN 12" (300 mm)**