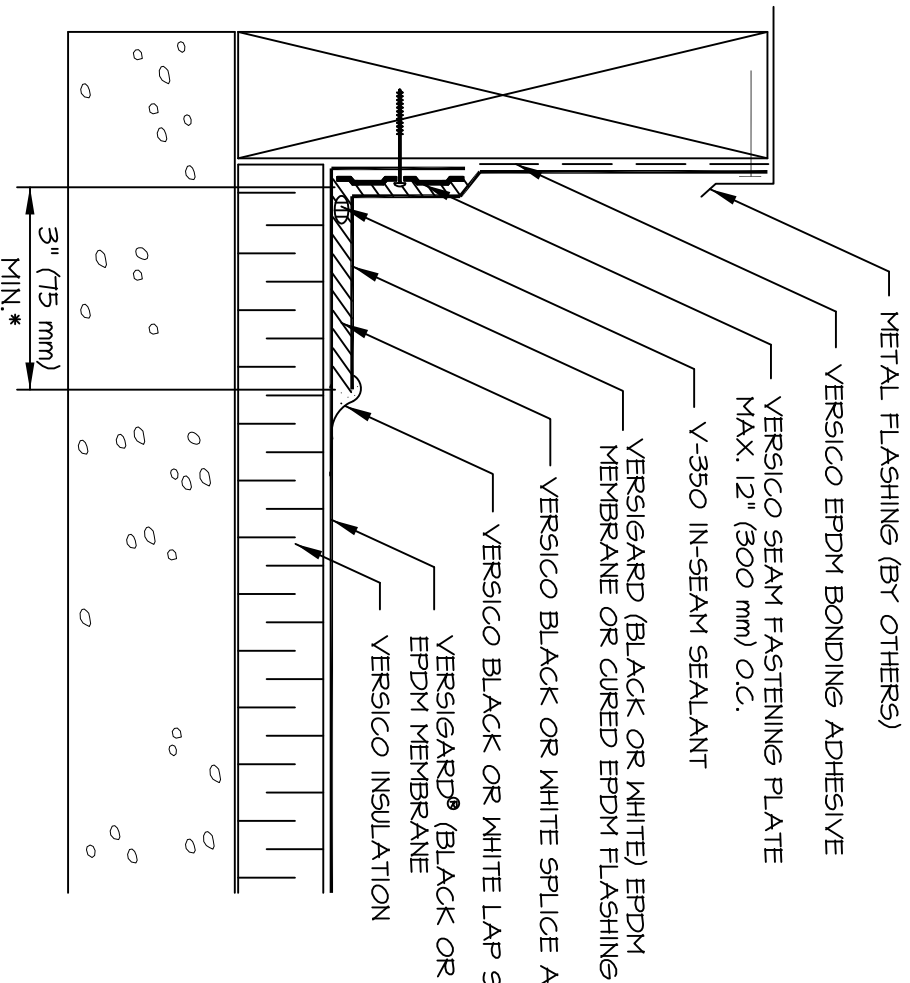
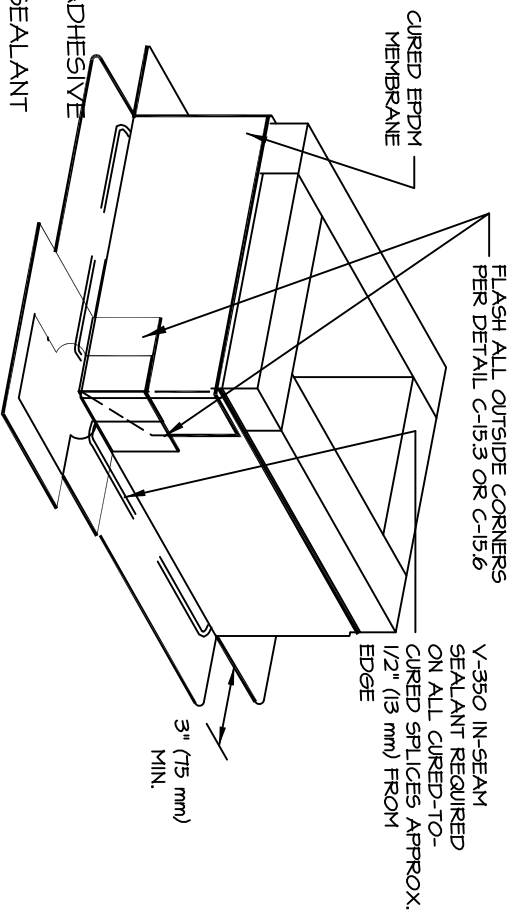


LIMITED FOR USE ON PROJECTS WITH MAX 10 YEAR WARRANTY.
 NOT FOR USE ON MECHANICALLY ATTACHED ROOFING SYSTEMS,
 REGARDLESS OF WARRANTY LENGTH.



* FOR PROPER IN-SEAM SEALANT PLACEMENT REFER TO DETAIL C-2.1



NOTES:

1. FASTEN MEMBRANE FLASHING 12" (300 mm) ON CENTER. IF FASTENER PENETRATES METAL COUNTERFLASHING, USE EPDM WASHER, APPLY WATER CUT-OFF MASTIC OR CAULK FASTENER HEAD.
2. IF VERTICAL SPLICE IS NOT LOCATED AT CORNER, 6" (150 mm) WIDE QUICK APPLIED UNCURED EPDM FLASHING MUST BE CENTERED OVER FIELD SPLICE AT ANGLE CHANGE.
3. FASTENING PLATES MAY BE INSTALLED HORIZONTALLY.

C-5.1 CURB FLASHING

FULLY ADHERED AND BALLASTED SYSTEMS ONLY