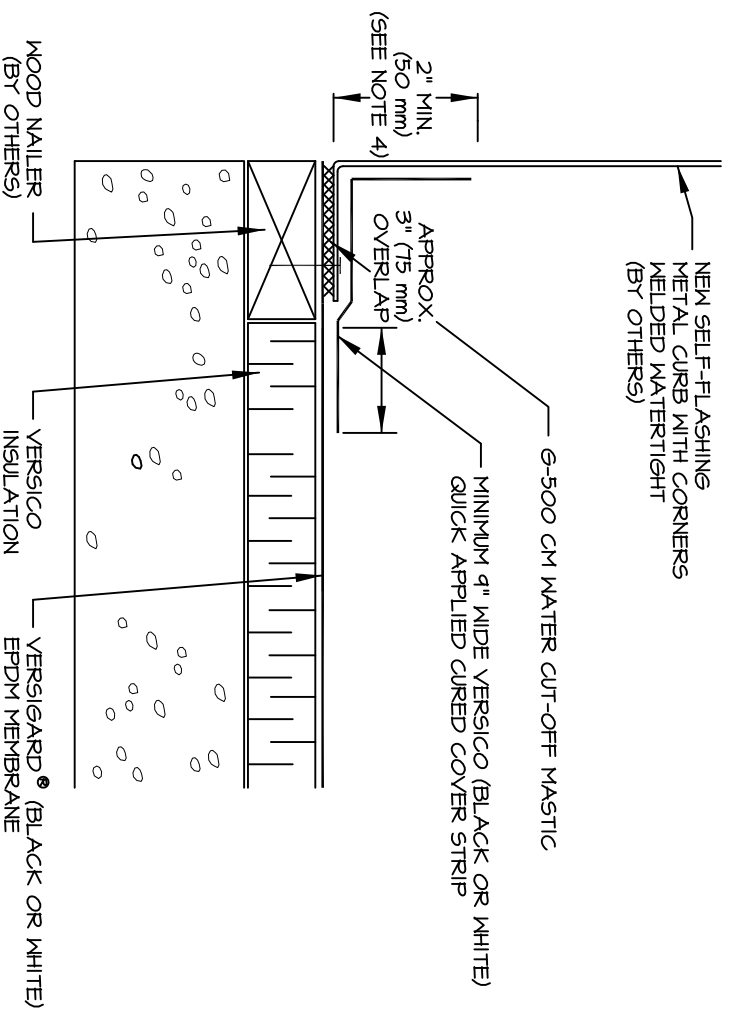


NEW SELF-FLASHING
METAL CURB WITH CORNERS
WELDED WATER-TIGHT
(BY OTHERS)



NOTES:

1. WOOD NAILER MUST EXTEND PAST TOTAL WIDTH OF METAL CURB DECK FLANGE.
2. CONSULT THE RESPECTIVE MANUFACTURER OF THE SELF-FLASHING METAL CURB FOR PROPER SECUREMENT. WATER CUT-OFF MASTIC MUST BE HELD UNDER CONSTANT COMPRESSION.
3. QUICK APPLIED CORNERS CANNOT BE INSTALLED ON THIS DETAIL DUE TO INCOMPLETE COVERAGE OF THE METAL FLANGE AT CORNERS.
4. FLASHING DOES NOT NEED TO BE EXTENDED VERTICALLY IF FLANGE WIDTH IS SUFFICIENT TO PROVIDE MINIMUM SPLICE BEYOND FASTENER.

C-5.3

NEW SELF-FLASHING METAL CURB