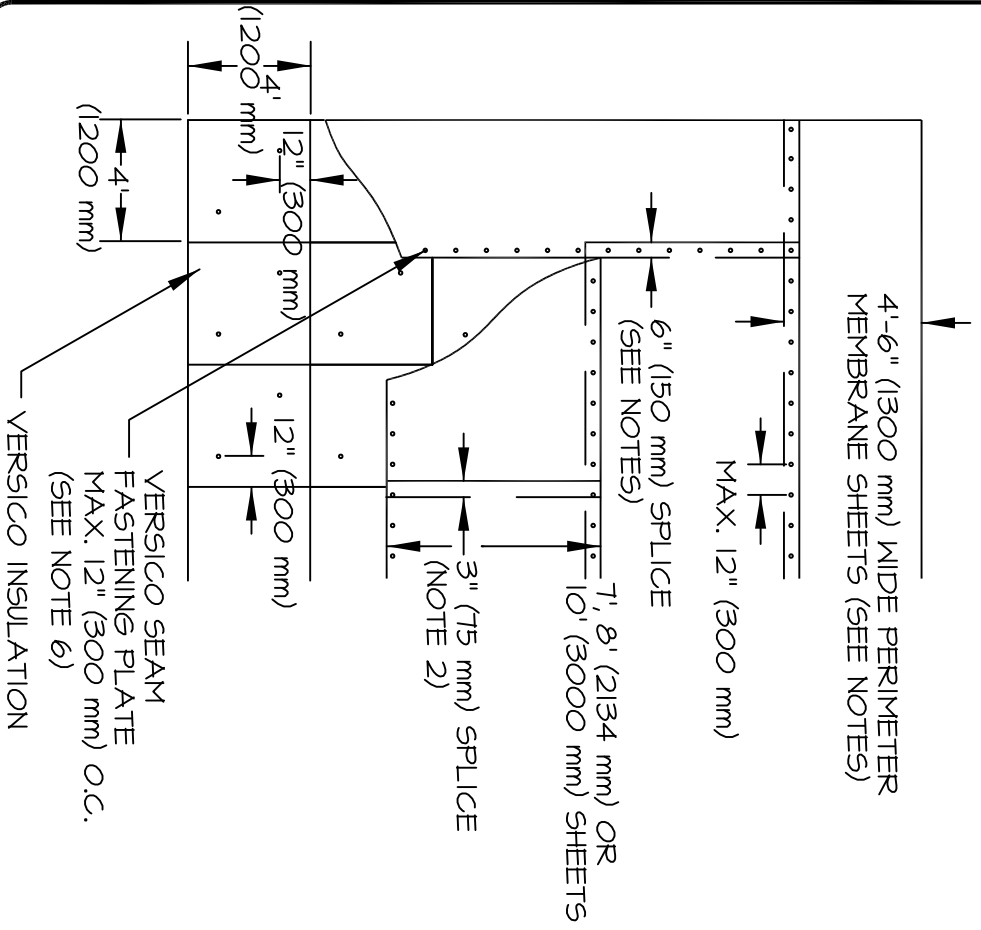


REFER TO SPECIFICATION FOR REQUIRED NUMBER OF PERIMETER SHEETS, WIDTH OF FIELD SHEETS AND FASTENING DENSITY



NOTES:

1. MECHANICALLY ATTACHED PERIMETER SHEET SHALL BE 3' - 6" (1000 m m) TO 4' - 6" (1300 mm).
2. END ROLL SECTIONS OF MEMBRANE DO NOT REQUIRE MECHANICAL FASTENING AND SHALL BE OVERLAPPED 3" (75 mm) MINIMUM.
3. REFER TO SPECIFICATION FOR PROPER MEMBRANE SPLICING PROCEDURES.
4. FOR MEMBRANE SPLICE AT SEAM FASTENING PLATES, REFER TO APPLICABLE MA-2 DETAIL.
5. INSULATION SHALL BE MECHANICALLY ATTACHED; FOR TYPE AND FASTENING PATTERN SEE SPECIFICATION.
6. POLYMER SEAM PLATES ARE REQUIRED IN LIEU OF SEAM FASTENING PLATES OVER STEEL DECKS.

MA-2 |
MEMBRANE PLACEMENT AND ATTACHMENT

