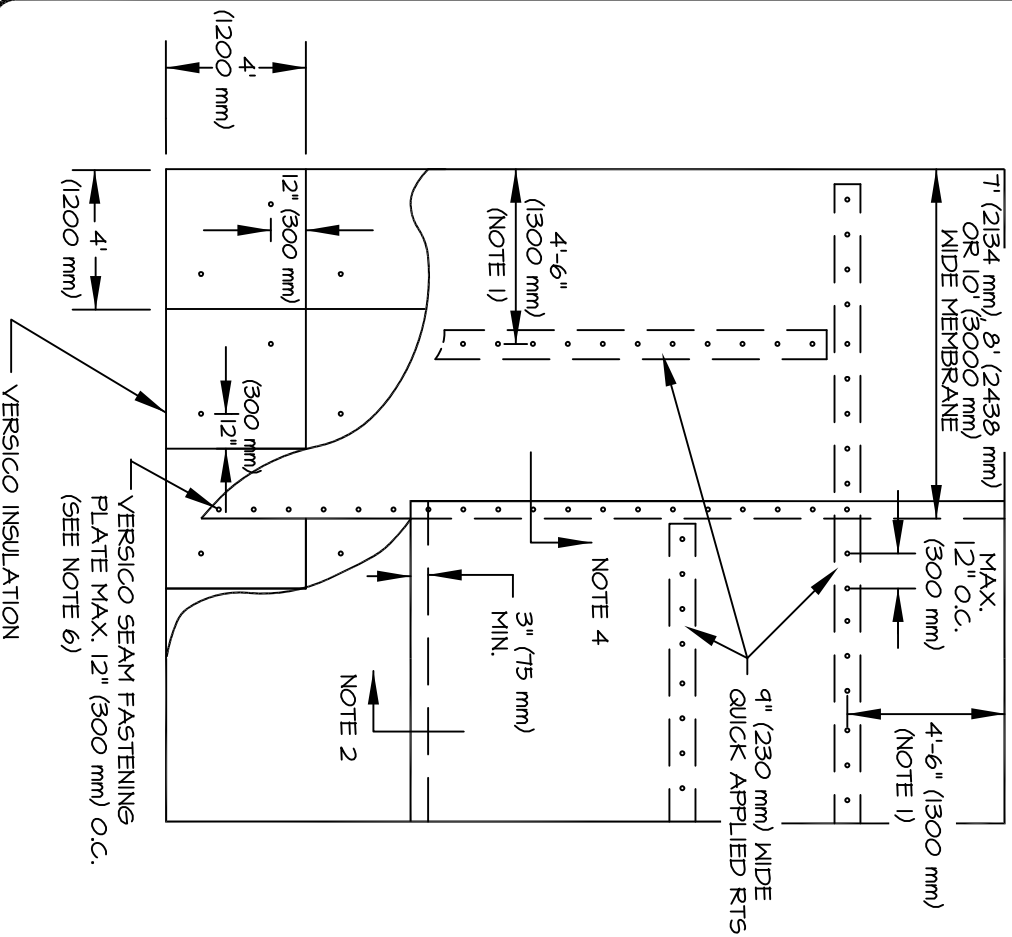
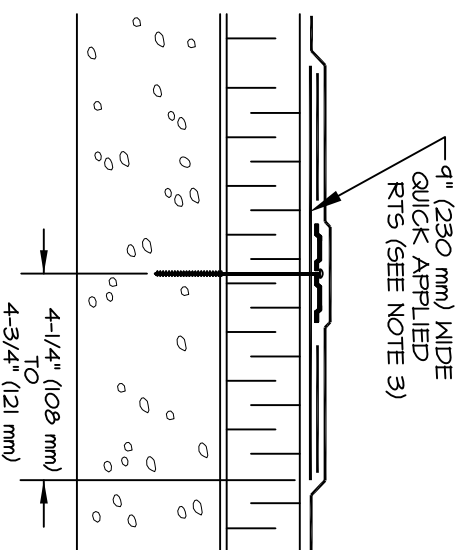


REFER TO SPECIFICATION FOR REQUIRED NUMBER OF PERIMETER SHEETS, WIDTH OF FIELD SHEETS AND FASTENING DENSITY.



NOTES:

1. MECHANICALLY ATTACHED PERIMETER SHEET SHALL BE 3'-6" (1000 mm) TO 4'-6" (1300 mm).
2. END ROLL SECTIONS OF MEMBRANE DO NOT REQUIRE MECHANICAL FASTENING AND SHALL BE OVERLAPPED 3" (75 mm) MINIMUM.
3. VERSICO V-150 PRIMER MUST BE APPLIED TO BACK SIDE OF EPDM PRIOR TO ADHERING MEMBRANE TO QUICK APPLIED RTS.
4. FOR MEMBRANE SPLICE AT SEAM FASTENING PLATES, REFER TO APPLICABLE MA-2 DETAIL.
5. INSULATION SHALL BE MECHANICALLY ATTACHED; FOR TYPE AND FASTENING PATTERN SEE SPECIFICATION.
6. POLYMER SEAM PLATES ARE REQUIRED IN LIEU OF SEAM FASTENING PLATES OVER STEEL DECKS.



MA-2 | 5 MEMBRANE ATTACHMENT WITH QUICK APPLIED REINFORCED TERMINATION STRIP (RTS)