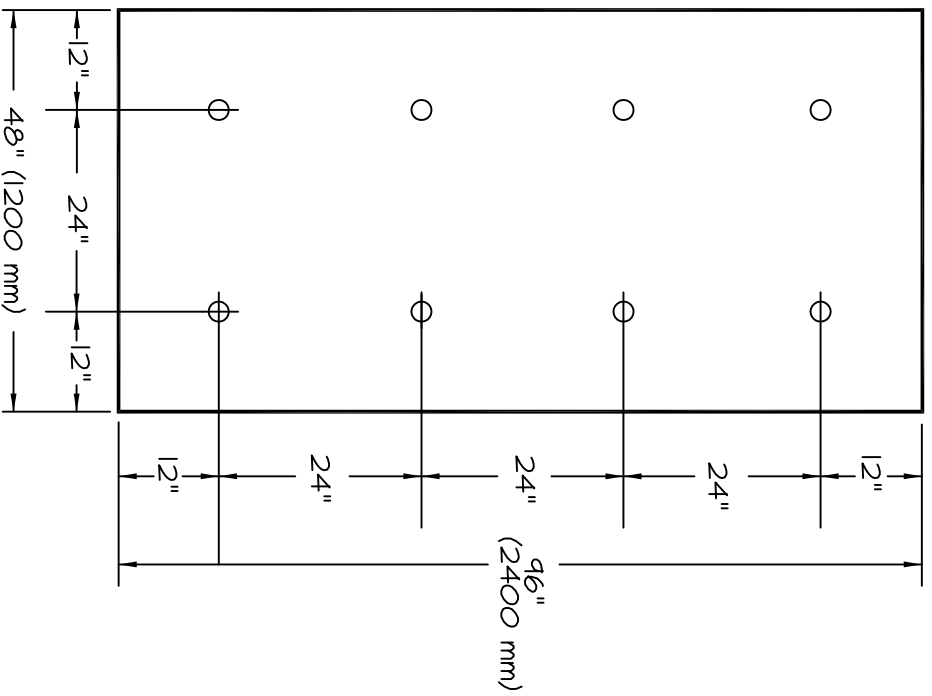
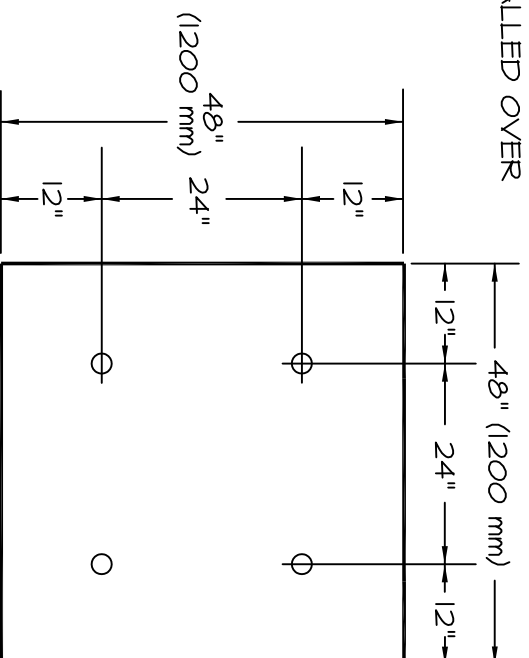


INSULATION FASTENING REQUIREMENTS FOR SURE-SEAL POLYISOCYANURATE INSULATION WITH A THICKNESS LESS THAN 1.5" (40 mm) WHEN INSTALLED OVER EXISTING ROOFING MEMBRANE WITHOUT A TEAROFF.



4' (1200 mm) X 8' (2400 mm) INSULATION BOARDS



4' (1200 mm) X 4' (1200 mm) INSULATION BOARDS

NOTE:

IF A FACTORY MUTUAL (FM) RATING IS NOT REQUIRED, THE FOLLOWING TOLERANCES ON DIMENSIONS BETWEEN FASTENERS ARE PERMITTED:

DIMENSIONS SHOWN ON DRAWING	PERMITTED TOLERANCES
12" (300 mm)	± 1" (25 mm)
24" (600 mm)	± 2" (50 mm)

MA-27.2 MECHANICAL ATTACHMENT VERSICO POLYISOCYANURATE LESS THAN 1.5" (40 mm) THICK

