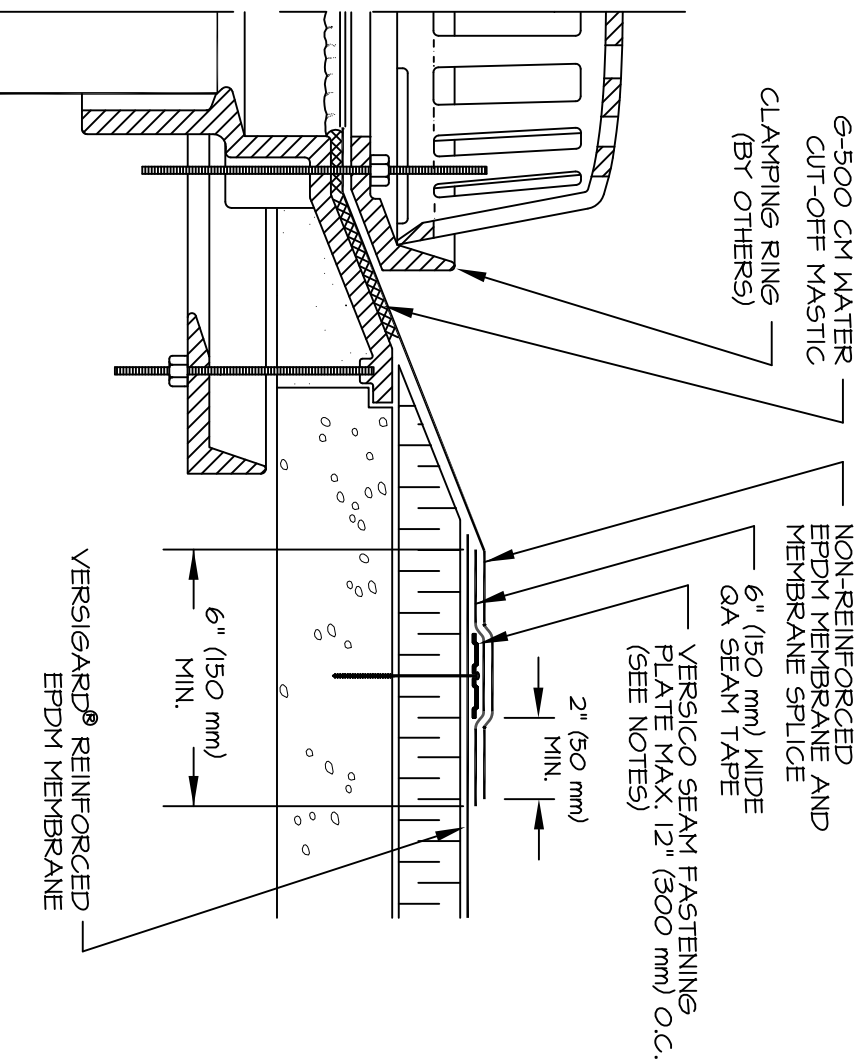


FOR DRAINS WITH TAPERED INSULATION AT DRAIN SUMP GREATER THAN 3" (75 mm) TO ONE HORIZONTAL FOOT (300 mm)



WHEN A SQUARE OR RECTANGULAR SECTION OF NON-REINFORCED EPDM MEMBRANE IS USED AS A SURFACE SPLICE, ROUND THE CORNERS OF THE NON-REINFORCED MEMBRANE FOR PROPER SPLICE.

NOTES:

1. REINFORCED EPDM MEMBRANE MUST BE FASTENED WITH SEAM FASTENING PLATES NO MORE THAN 12" (300 mm) ON CENTER WHEN THE TAPERED INSULATION AT THE DRAIN SUMP IS GREATER THAN 3" (75 mm) TO THE HORIZONTAL FOOT, CUT REINFORCED MEMBRANE EVEN WITH TOP EDGE OF THE DRAIN SUMP.
2. WHEN TAPERED INSULATION AT THE DRAIN SUMP IS LESS THAN 3" (75 mm) TO THE HORIZONTAL FOOT, REFER TO C-6.2 DETAIL.
3. USE NON-REINFORCED EPDM MEMBRANE AS A SURFACE SPLICE AND EXTEND INTO DRAIN CLAMPING RING.
4. LOCATE EDGE OF THE SURFACE SPLICE OUT OF THE DRAIN SUMP AT LEAST 6" (150 mm) IN ALL DIRECTIONS ONTO THE HORIZONTAL MEMBRANE.
5. INSULATION TAPER SHALL NOT BE STEEPER THAN 6" (150 mm) (VERTICAL) IN 12" (300 mm) (HORIZONTAL).
6. POLYMER SEAM FASTENING PLATES ARE REQUIRED IN LIEU OF SEAM FASTENING PLATES OVER STEEL DECK.

MA-6

ROOF DRAIN WITH SUMP