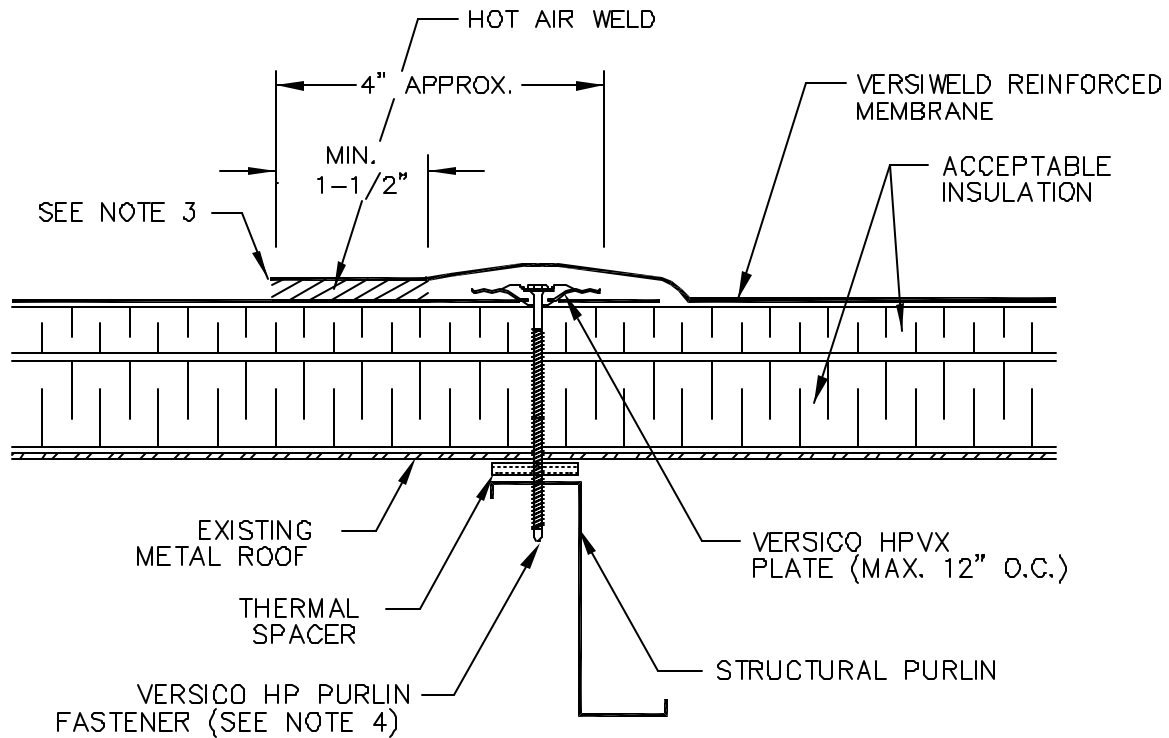


Versico Incorporated

VersiWeld™ PURLIN ATTACHED ROOFING SYSTEM

MECHANICALLY-ATTACHED OPTION



NOTES:

1. REFER TO SPECIFICATIONS FOR ACCEPTABLE VERSICO FASTENERS, PLATES AND FASTENING DENSITY. IF A FACTORY MUTUAL RATING IS REQUIRED, REFER TO VERSIWELD CODE APPROVAL GUIDE FOR SPECIFIC REQUIREMENTS.
2. POSITION SEAM FASTENING PLATES BEYOND NON-REINFORCED ENCAPSULATED EDGE.
3. APPROXIMATELY 1/8" DIAMETER BEAD OF EDGE SEALANT IS REQUIRED ON CUT EDGES OF VERSIWELD REINFORCED MEMBRANE.
4. HP PURLIN FASTENERS MUST PENETRATE THE PURLIN A MINIMUM OF 1 INCH.